



Lilly.

Add a touch of class to your café or break-out space with the Lilly chair by Calligaris. Featuring a ruffled velvet fabric or faux leather back detail, Lilly has a refined, luxurious feel and will add flair to any space.

Base finishes



Metal Matt Black



Black Nickel



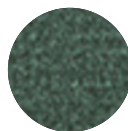
Met. Matt Bronze



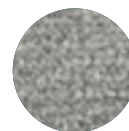
Seat fabric options



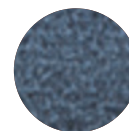
Venice Velvet Sand



Venice Velvet Forest Green



Venice Velvet Ash Grey



Venice Velvet Ocean Blue



Venice Velvet Brick Red



Venice Velvet Pink



Faux Leather Vintage Desert



Faux Leather Vintage Tobacco



Faux Leather Vintage Ash grey



Faux Leather Vintage Ebony