

# Dixon.



**connubia**

Dixon by Connubia is a modern, round café-style table set on a ten-sided conical pedestal base made from coated faceted sheet-metal.

Available with a wide range of base colours and tabletop finishes with contrasted edging to add some spice to your space.



### Table dimensions:

Height: 760mm  
Diameter: 900 / 1200mm

### Tabletop edge options



Fin. Black



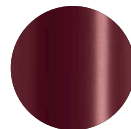
Fin. Brushed Brass



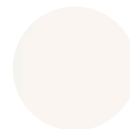
### Base colour options



Met. Black

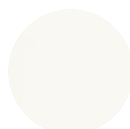


Met. Oxide Red

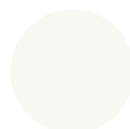


Met. Optic White

### Tabletop finishes



Lam. HPL Matt  
Optic White



Lacq. Matt  
Optic White



Mel. Beton Grey



Mel. Materico White



Mal. Natural Oak



Mel. Oxide Bronze



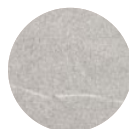
Lam. HPL Slate Grey



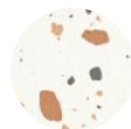
Mel. Termocotto



Lam. Black



Mel. Piasentina Stone



Mel. Terrazzo